

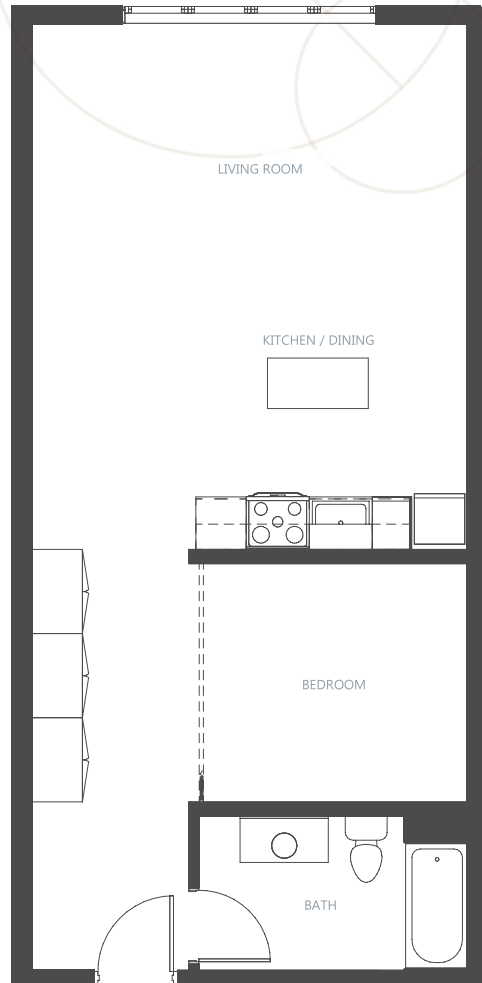


FLOORPLAN



203	221	
204	222	
205	223	316
206 [‡]	303	318
209	304	319
216 [*]	305	321
218 [*]	306	322
219 [*]	309	323

1 BED
1 BATH
UNIT NUMBER(S)



Scale = 1" = 10'

Modern loft-style apartments.

- Kitchen island*
- Modern bath fixtures
- Closet organization systems
- LED lighting
- LVT flooring
- Individual unit temperature controls
- Andersen E-series and 100 series full-height windows
- Full 9' ceilings
- Wall-hung bathroom sink cabinets
- Solid-surface counters and stainless steel appliances
- Walk-in closets or custom IKEA Pax-style closet units
- Pocket doors or sliding room dividers*
- Soft closing kitchen cabinets •
- Units 216, 218, 219 have a terrace

- Rooftop community lounge and grilling terrace
- Pet-friendly building
- Covered, secure parking and bicycle storage
- Walkout front porch entries*

500 North 3rd Street, Bismarck, ND 58501
www.ren-lofts.com
 e: contact@ren-lofts.com | ph: 701-595-0067

Floor plans are not to scale. Design and Development by Lander Group. We reserve the right to adjust features, pricing, and availability at any time.

*In select units

