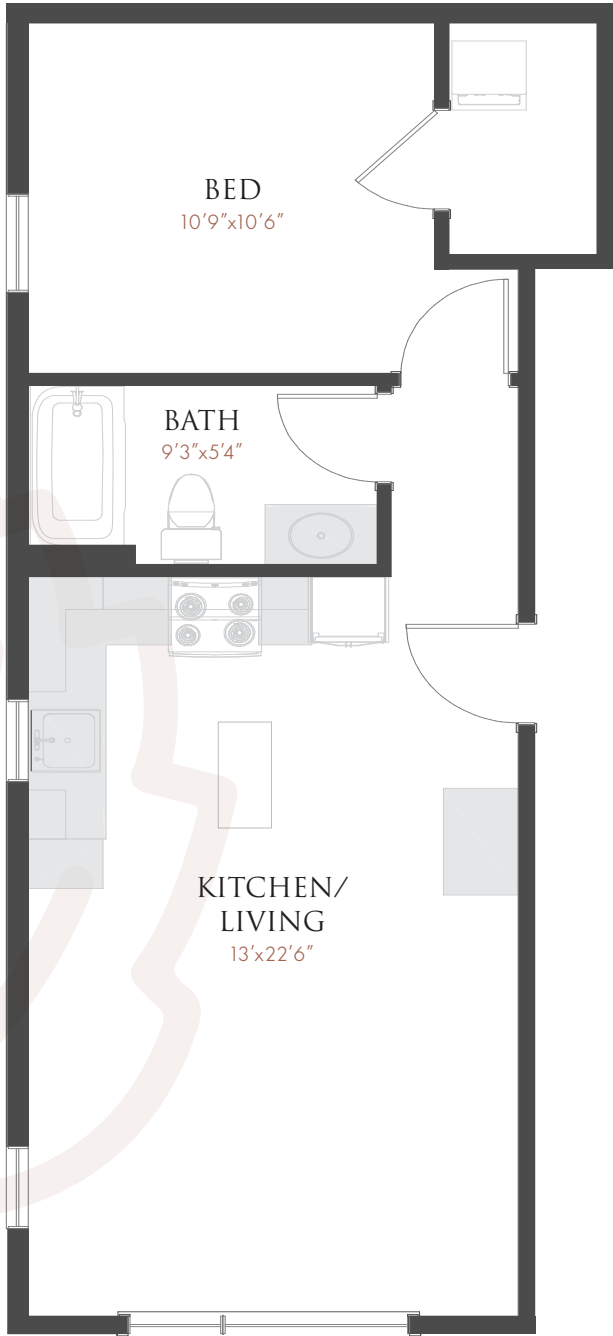




**C** FLOORPLAN  
**1** BED  
**1** BATH

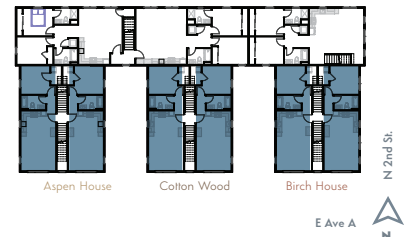
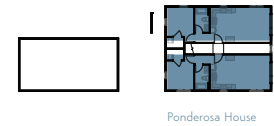
UNIT NUMBER(S)  
**120D 112D**  
**120C 112C**  
**118D 510D**  
**118C 510C**



**SINGLE-FAMILY  
 STYLE LIVING.**

- Pet-friendly building
- Locked parking and bicycle storage available
- Access to Renaissance Lofts rooftop community lounge and grilling terrace
- Walkout front porch entries\*
- In-unit washer and dryer

- Modern bath fixtures
- LED lighting
- LVT flooring
- Two walls of Andersen E-series and 100 series full-height windows
- Wall-hung bathroom sink cabinets
- Solid-surface counters and stainless steel appliances
- Kitchen islands\*



120 E Ave A, Bismarck, ND 58501  
 www.groveapts-bismarck.com  
 contact@groveapts-bismarck.com  
 ph: 701-595-0067

Floor plans are not to scale. Design and Development by Lander Group. We reserve the right to adjust features, pricing, and availability at any time.

\*in select units

